

Customer :

customer

Customer part :

customer part

Comment :

Comment

S1=2.87

S2=3.85

Tmax=459

Tp S2=498.0

PI=0.43

HI=121

Sample =1642.10

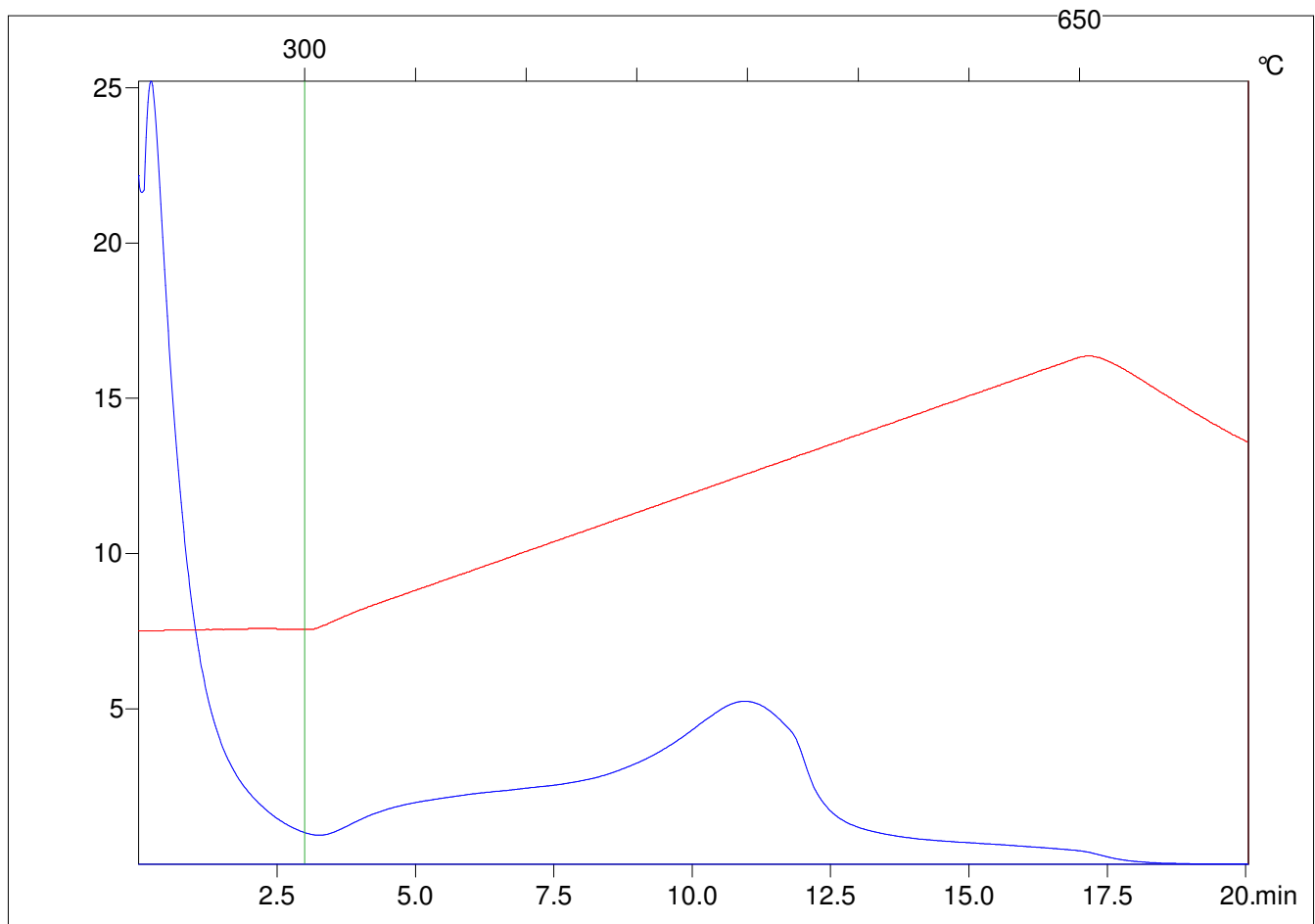
Method =Bulk Rock

Cycle=Basic

KFID(10*9)=1444

Qty =70.1

TOC=3.17



C:\VINCI\PK1792\PK047.R00 : FID pyrolysis graphic

State

Pyro Status

Oxi Status